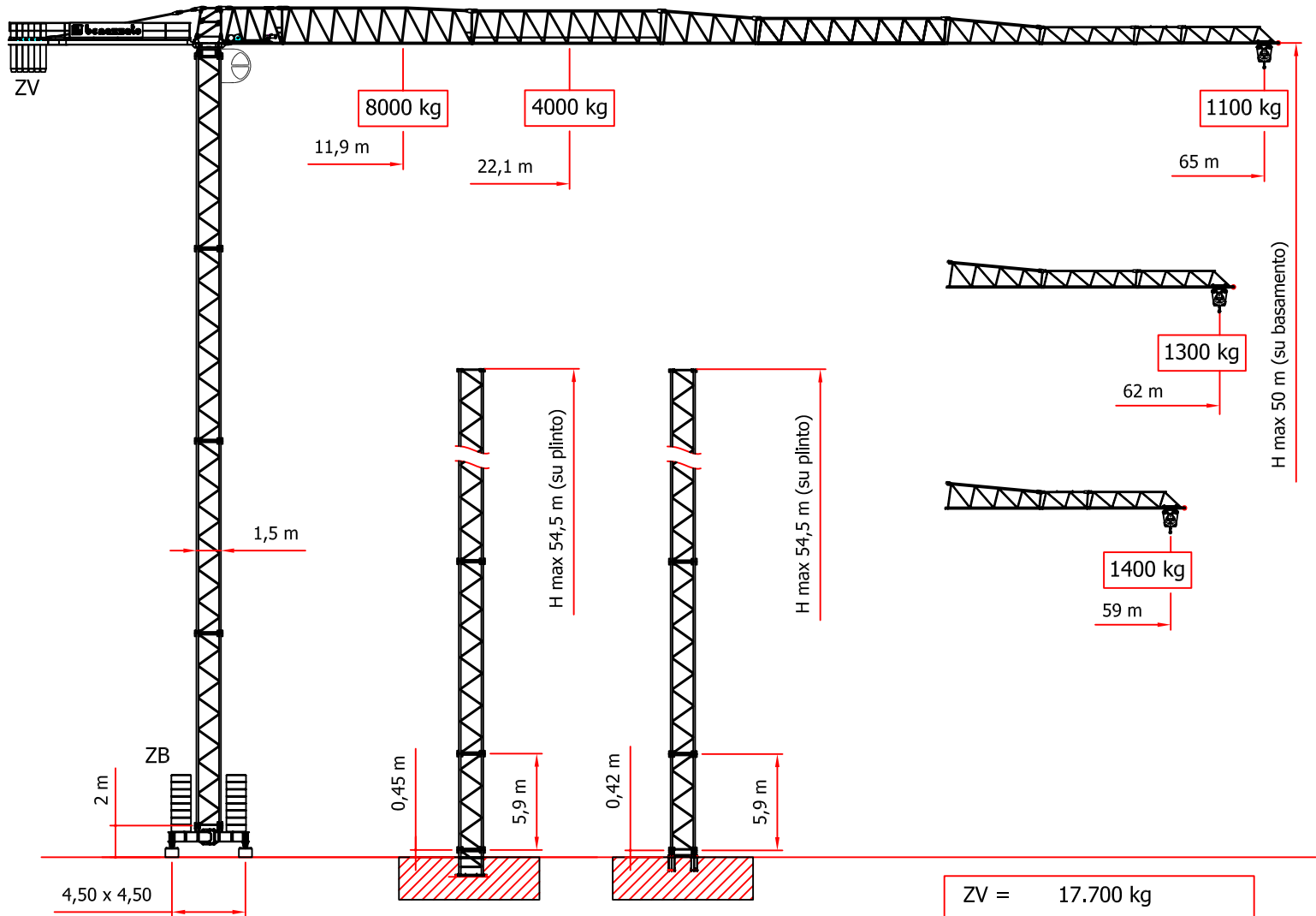


SERIE CBF 65 - 8

CITY 65/1100



Potenza installata
 Power set up
 Puissance installée
 Kraftbedarf

kW 35 (Argano 33 HP)

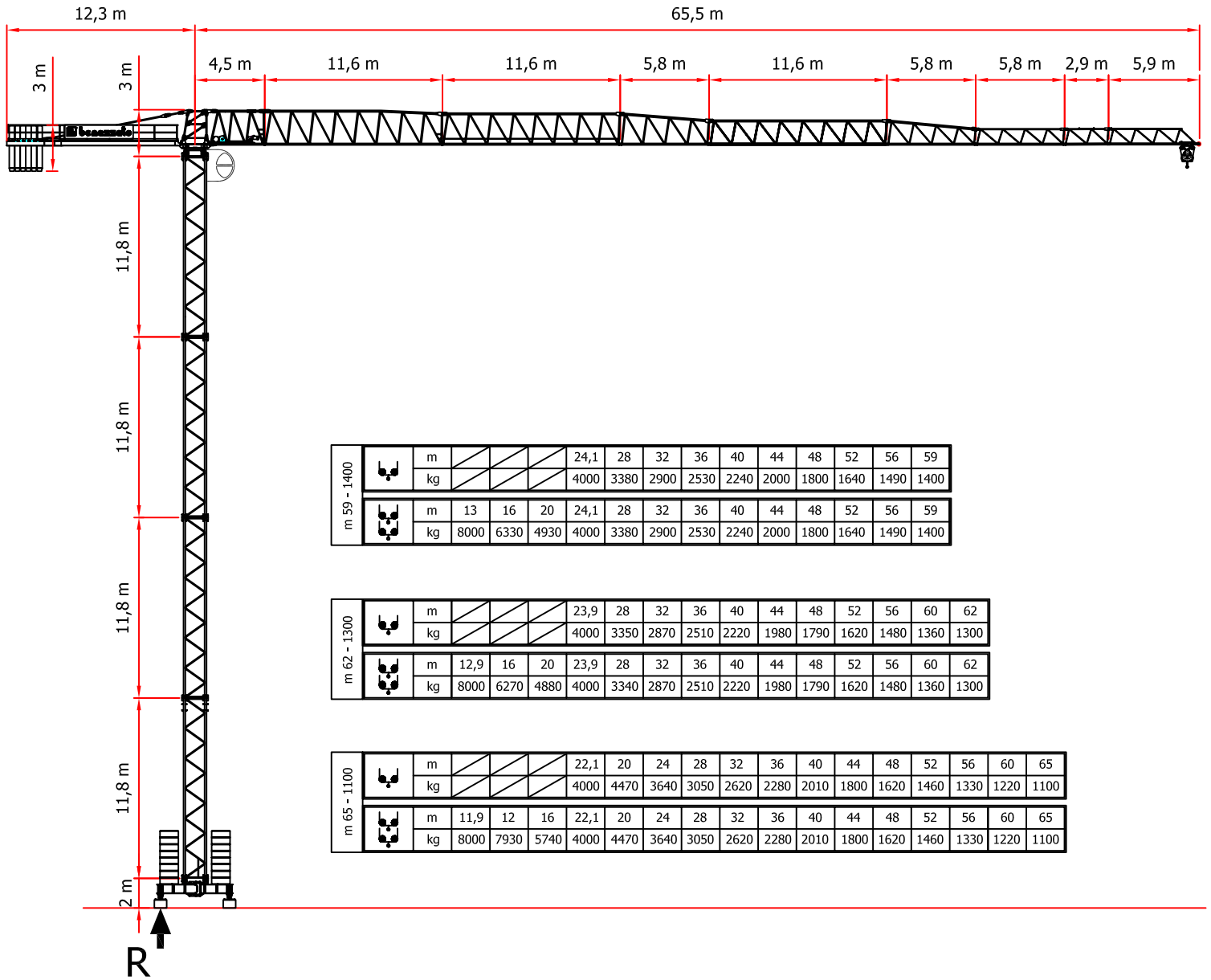
Corrente trifase
 Three-phase current
 Courant triphasée
 Drehstrom

400 V 50 Hz

ZV = 17.700 kg

ZB/H26= 50.000 kg
 ZB/H38= 60.000 kg
 ZB/H50= 80.000 kg

HP 33					30/60 m/1' 2,2 kW INVERTER
↓↑	kg		m/1'		
		2000	60		0-1,1 rpm 3x60 Nm
		4000	30		
		4000	7		
		4000	30		
		8000	15		
		8000	3,5		



CBF 65

REAZIONE

R = 72.000 kg

REACTION

DIN 15018 H₁ B₂ B₃ DIN 15019

MODIFICHE RISERVATE

SUBJECT TO MODIFICATION

RESERVA DE MODIFICACIONES

MODIFICATIONS RESERVEES

ANDERUNGEN VORBEHALTEN